

ACTIVITY	RESPONSIBILITY	2019												2020												2021											
		DEC	JAN	FEB	MAR	APR	MAY	JUN	JUL	AUG	SEP	OCT	NOV	DEC	JAN	FEB	MAR	APR	MAY	JUN	JUL	AUG	SEP	OCT	NOV	DEC	JAN	FEB	MAR	APR	MAY	JUN	JUL	AUG	SEP	OCT	NOV
IDENTIFY BOARD FOCUS AREAS	SUBCOMMITTEE	█																																			
CONFIRM BOND TIMELINE	SUBCOMMITTEE													█																							
POLLING	STAFF	█																																			
IDENTIFY BOND AMOUNT	SUBCOMMITTEE													█																							
COMPLETE HIGH SCHOOL MASTER PLANS *	STAFF	█																																			
REVIEW DISTRICT ENROLLMENT/CAPACITY NEEDS	STAFF	█																																			
REVIEW AND PRIORITIZE DISTRICT EDUCATIONAL SPACE NEEDS	STAFF	█																																			
REVIEW AND PRIORITIZE DISTRICT PHYSICAL FACILITY NEEDS	STAFF	█																																			
CONFIRM DECISION CRITERIA	SUBCOMMITTEE													█																							
CONFIRM BOND OPTIONS FOR PUBLIC INPUT	SUBCOMMITTEE													█																							
POLLING	STAFF													█																							
COMMUNITY ENGAGEMENT (BEGIN AFTER STRATEGIC PLANNING)	STAFF													█																							
BOND DEVELOPMENT COMMITTEE	STAFF													█																							
REFINE BOND OPTIONS FOR PUBLIC INPUT	SUBCOMMITTEE													█																							
COMMUNITY ENGAGEMENT	STAFF													█																							
BOND ACCOUNTABILITY COMMITTEE	STAFF													█																							
FINALIZE BOND "PACKAGE" (SCOPE, SCHEDULE & BUDGET)	SUBCOMMITTEE													█																							
FINALIZE BOND LANGUAGE	BOE													█																							
SUBMIT BALLOT	STAFF																									█											
VOTE	PUBLIC																									█											
OTHER ACTIVITIES		█																																			
STRATEGIC PLAN		█																																			
FACILITIES CONDITION ASSESSMENT		█																																			
DLI / FOCUS OPTION REVIEW		█																																			
ENROLLMENT BALANCING & MS PROGRAMMING - DATA ANALYSIS		█																																			
ENROLLMENT BALANCING & MS PROGRAMMING - COMMUNITY ENGAGEMENT		█																																			
ENROLLMENT BALANCING & MS PROGRAMMING - CONCLUSIONS & RECOMMENDATIONS		█																																			
STUDENT SUCCESS ACT IMPLEMENTATION		█																																			
LRFP UPDATE (AFTER FCA & ENROLLMENT)		█																																			
KELLOGG MODERNIZATION		█																																			
MADISON MODERNIZATION		█																																			
LINCOLN MODERNIZATION		█																																			
BENSON MODERNIZATION		█																																			

* Jefferson, Cleveland, Wilson, Grant "bowl"

DRAFT 11.27.19

ROOSEVELT HS ADDITION STUDIES / DEC 17, 2019

PROJECT GOALS / STAKEHOLDER FEEDBACK



INCREASE CAPACITY

- + From existing capacity to 1700 total student capacity to be more aligned with 2017 Ed Spec

CAREER TECHNICAL EDUCATION

- + Increase size of Construction CTE space
- + Increase size of Maker's Lab

OTHER NEEDS

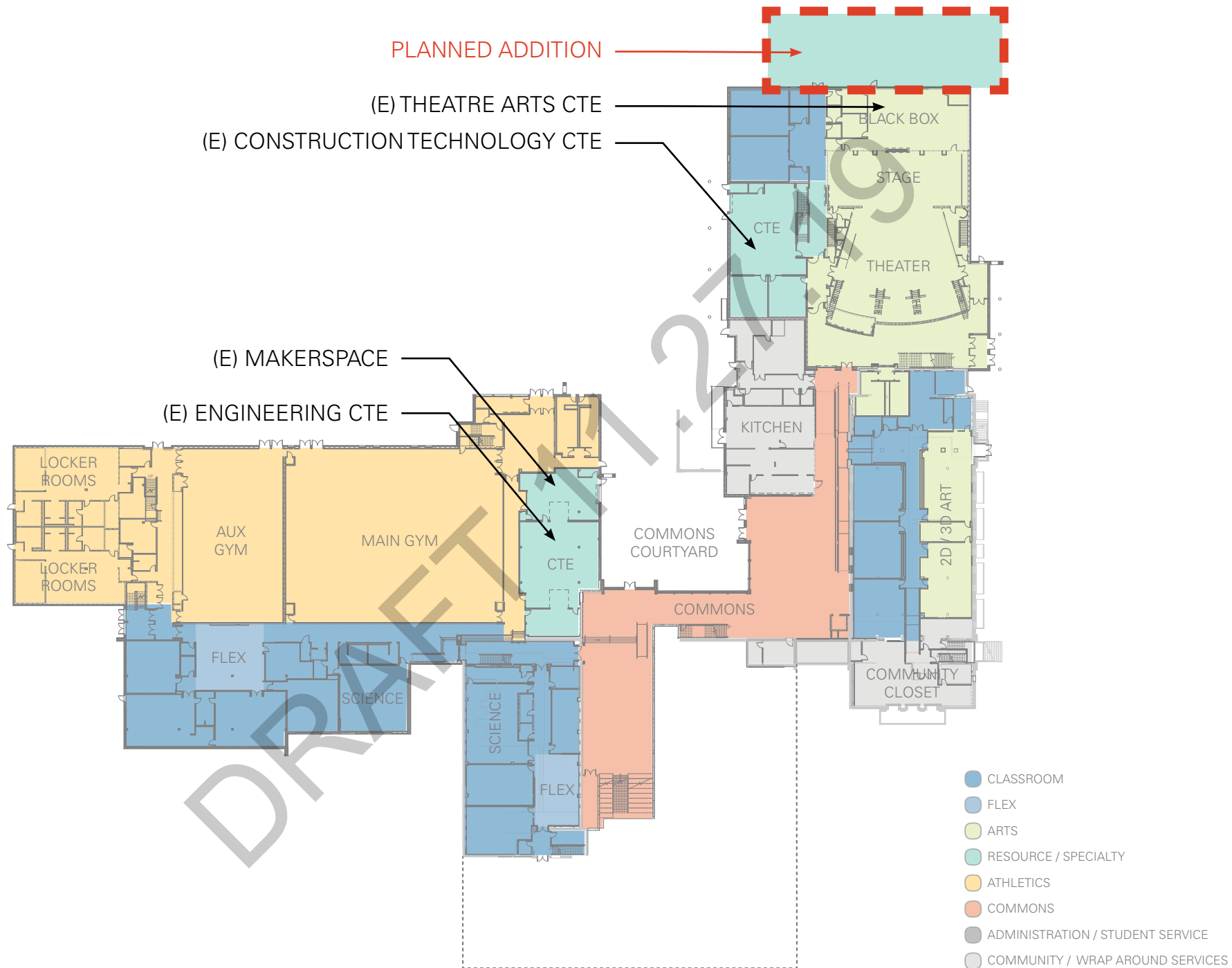
- + Large flexible space for 50 student senior inquiry



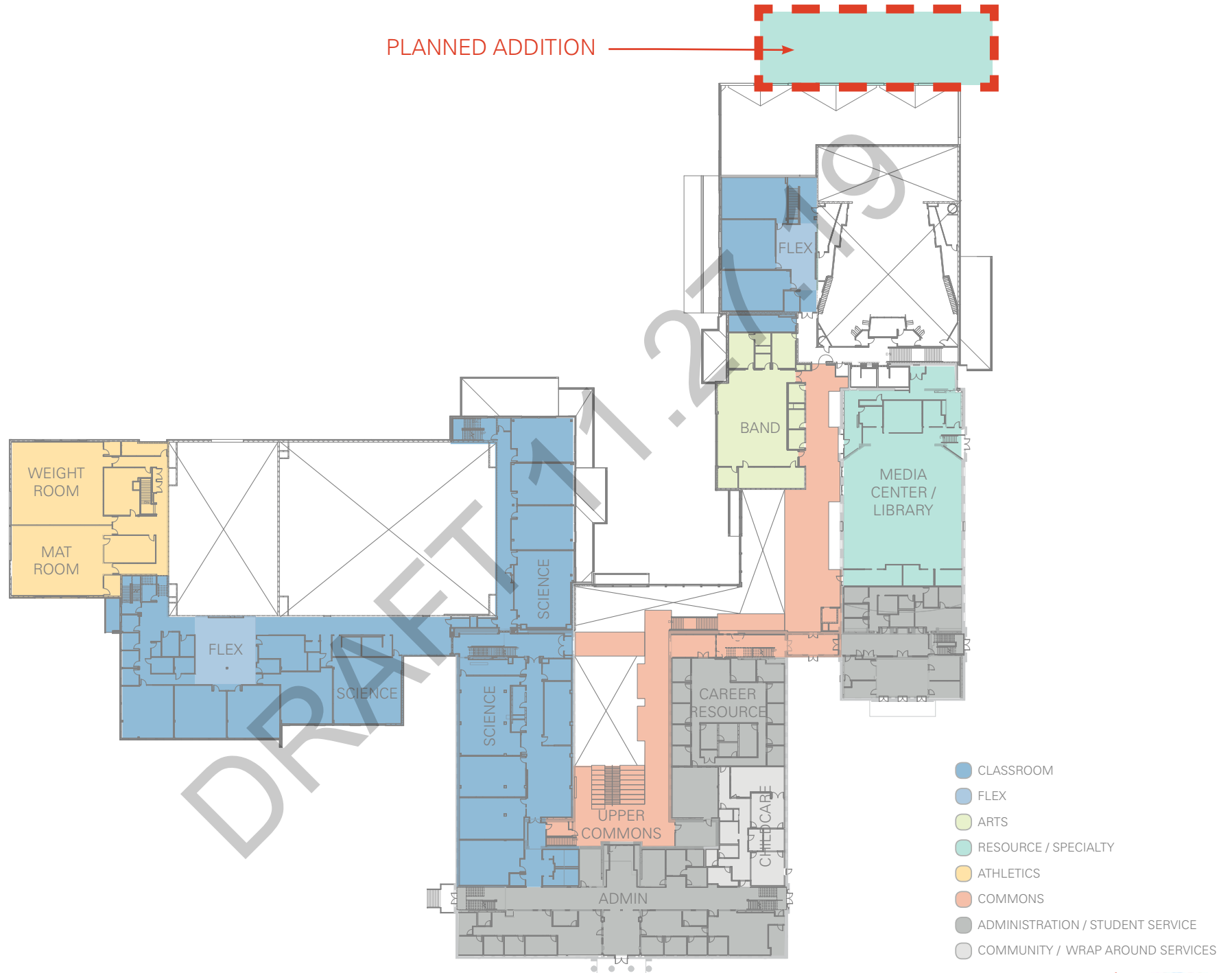
OTHER CONSIDERATIONS

- + Equity
- + Safety & Security
- + Design Cohesiveness

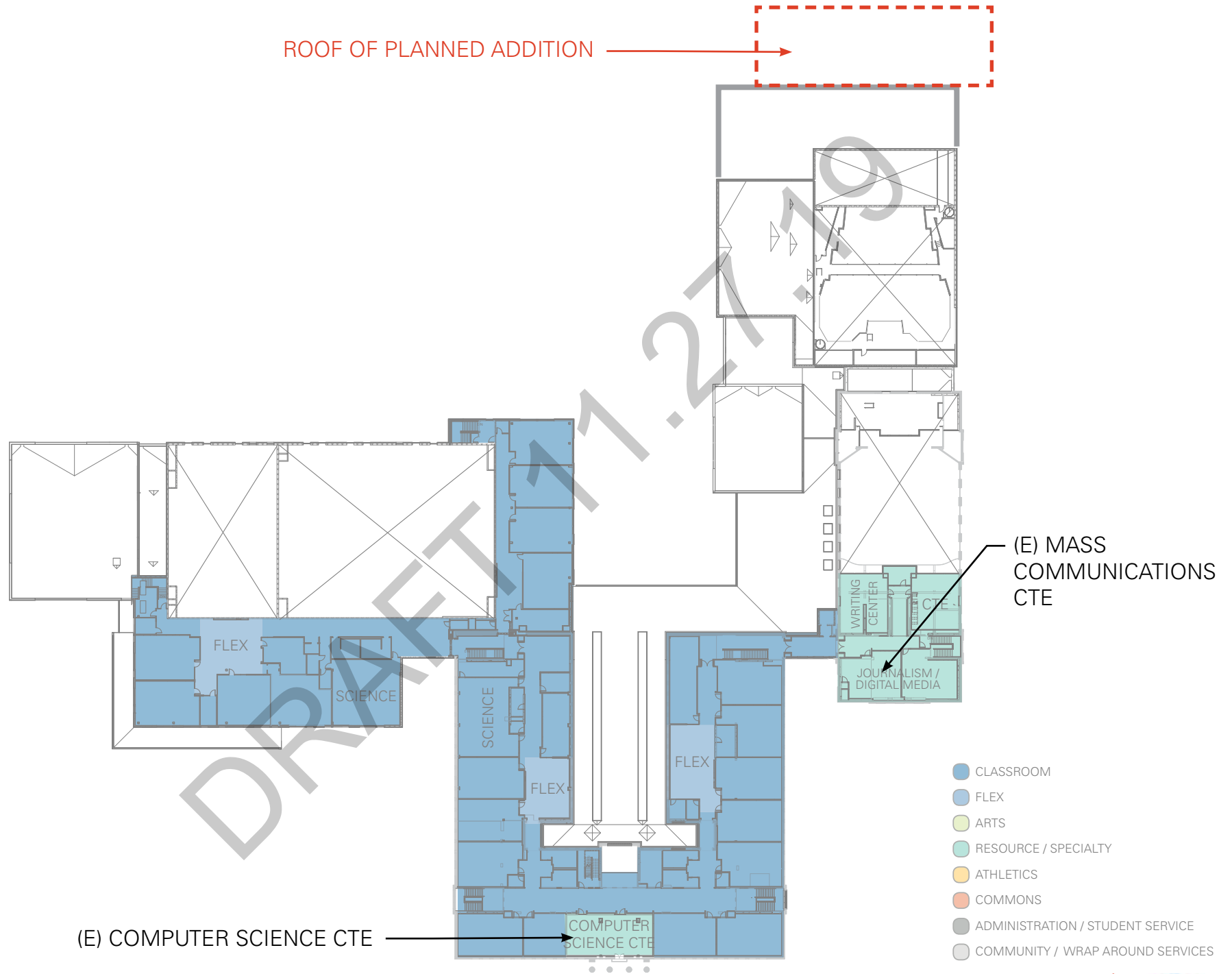
EXISTING RHS / GROUND FLOOR



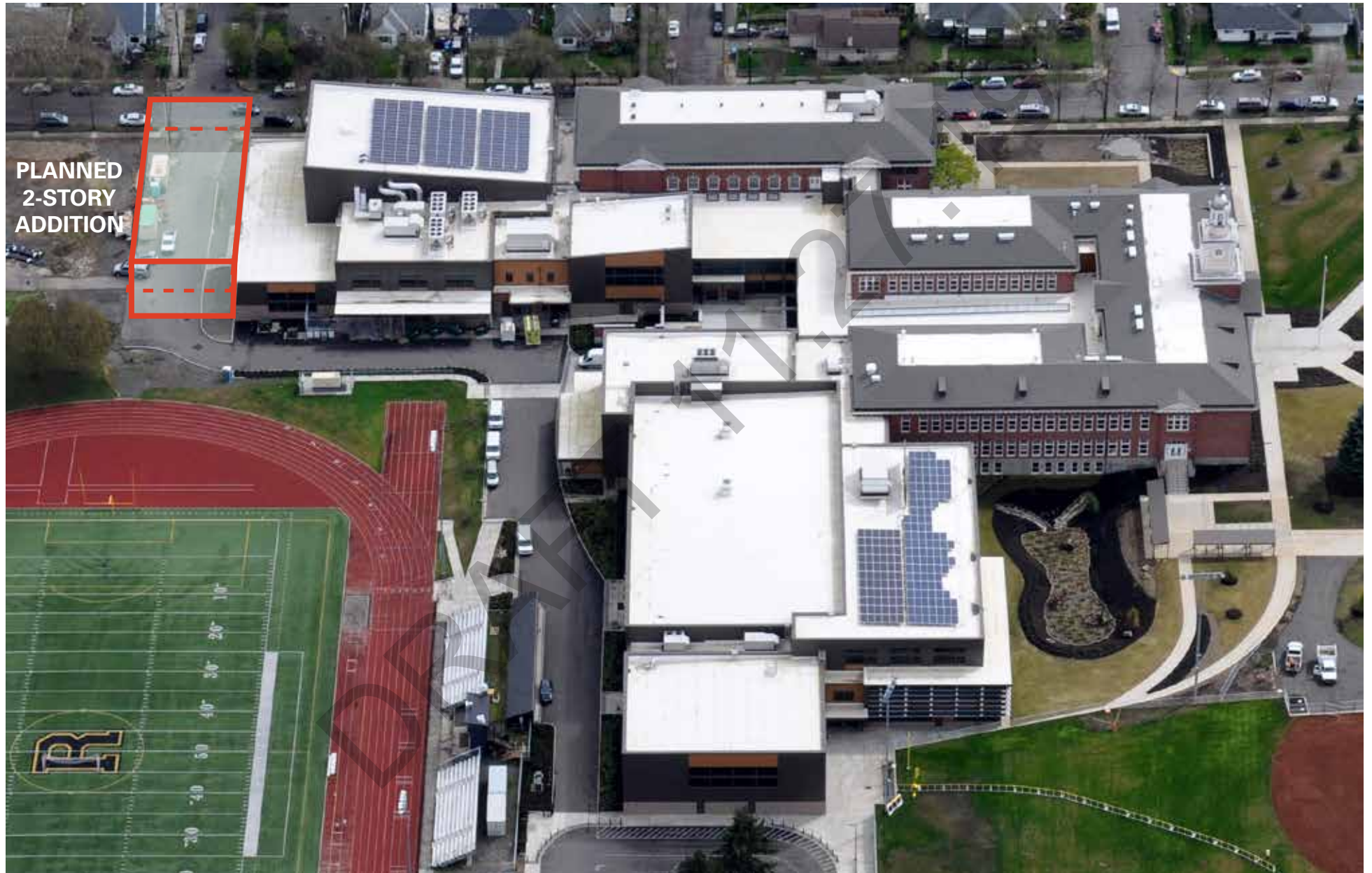
EXISTING RHS / FIRST FLOOR



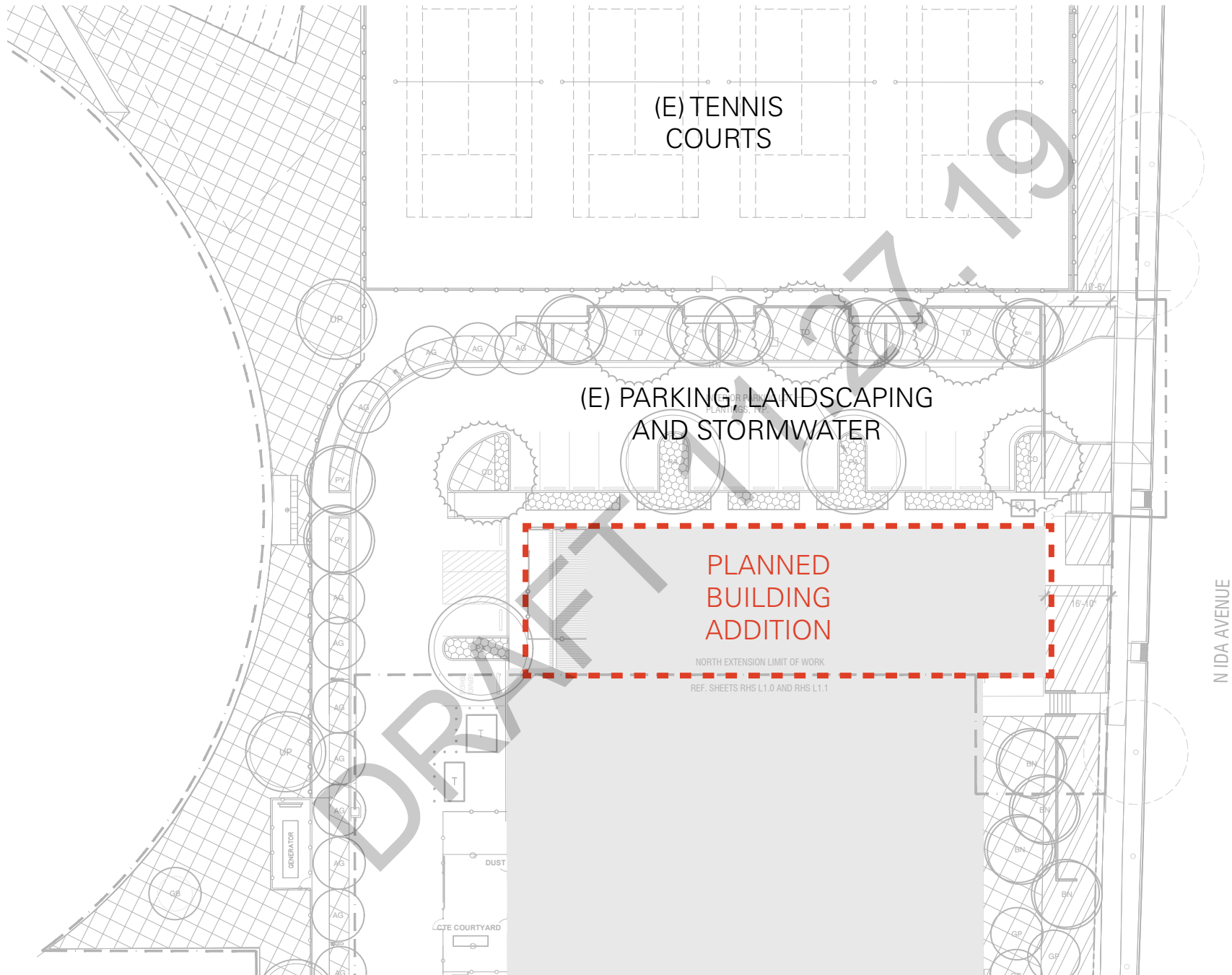
EXISTING RHS / SECOND FLOOR



OVERVIEW / EXTERIOR MASSING WITH PLANNED ADDITION



PLANNED
2-STORY
ADDITION



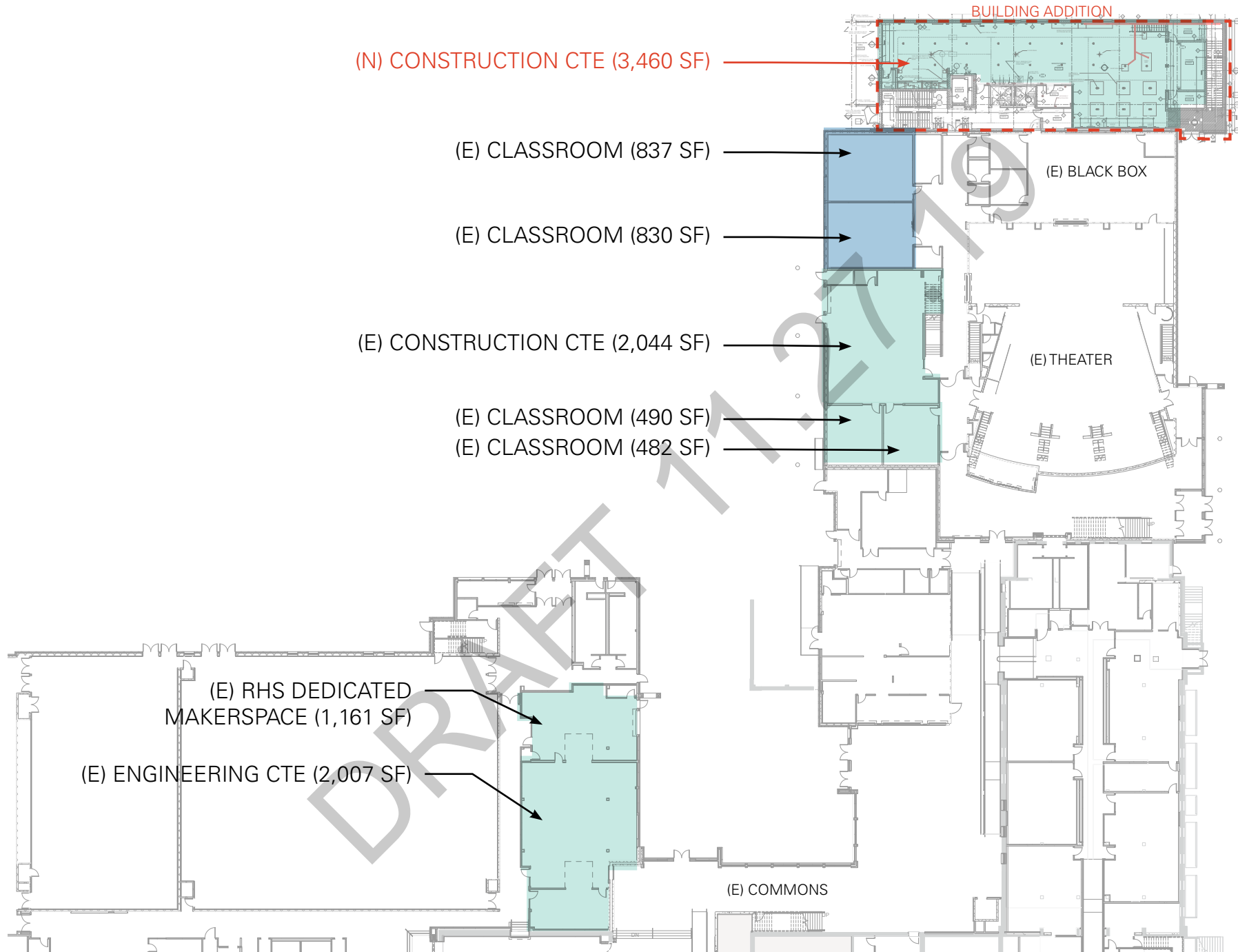
EXTERIOR / CONCEPTUAL RENDERING



EXISTING DESIGN / ADDITION WITH CONSTRUCTION CTE & MAKERSPACE

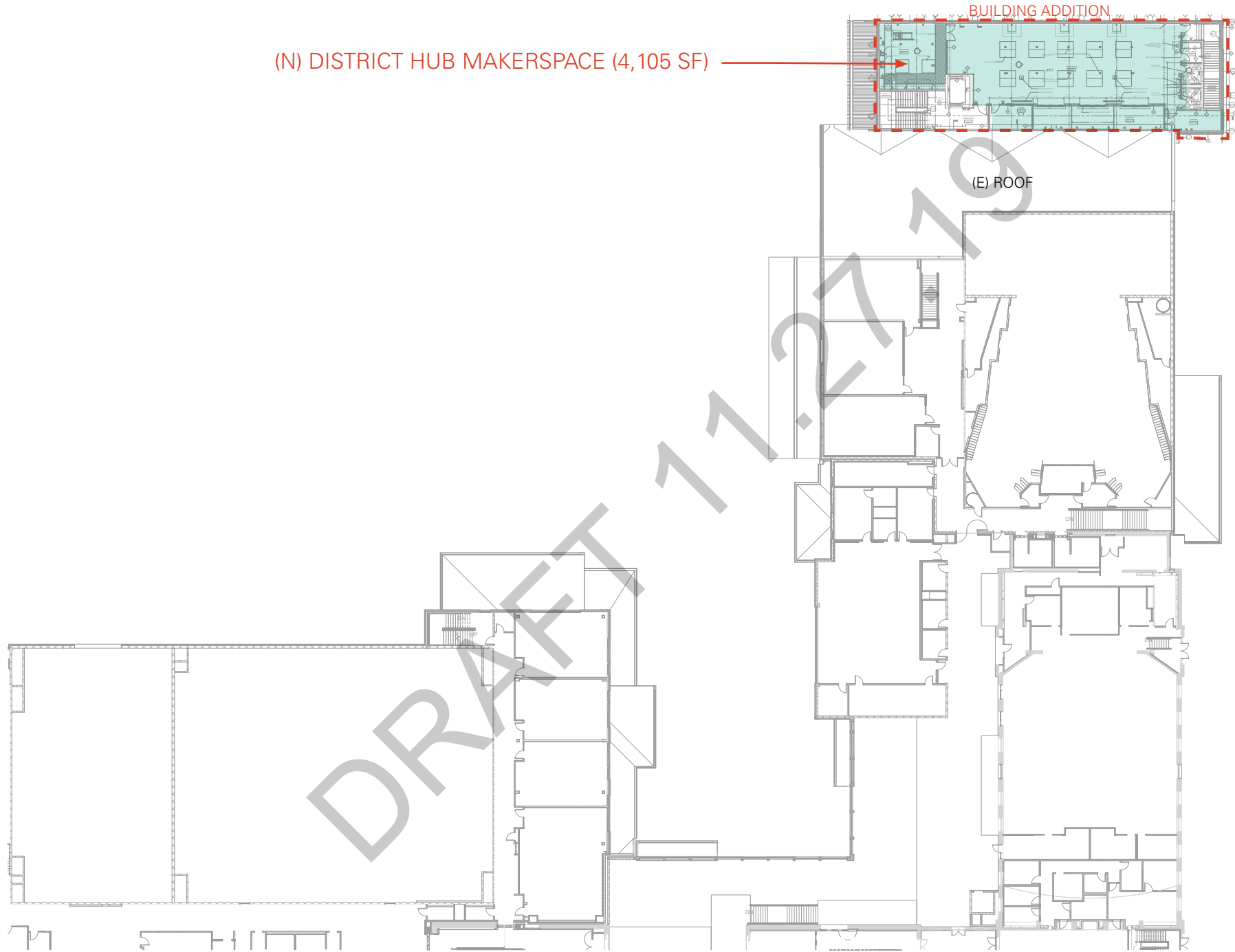
DRAFT 11.27.19

EXISTING DESIGN / GROUND FLOOR



EXISTING DESIGN / FIRST FLOOR

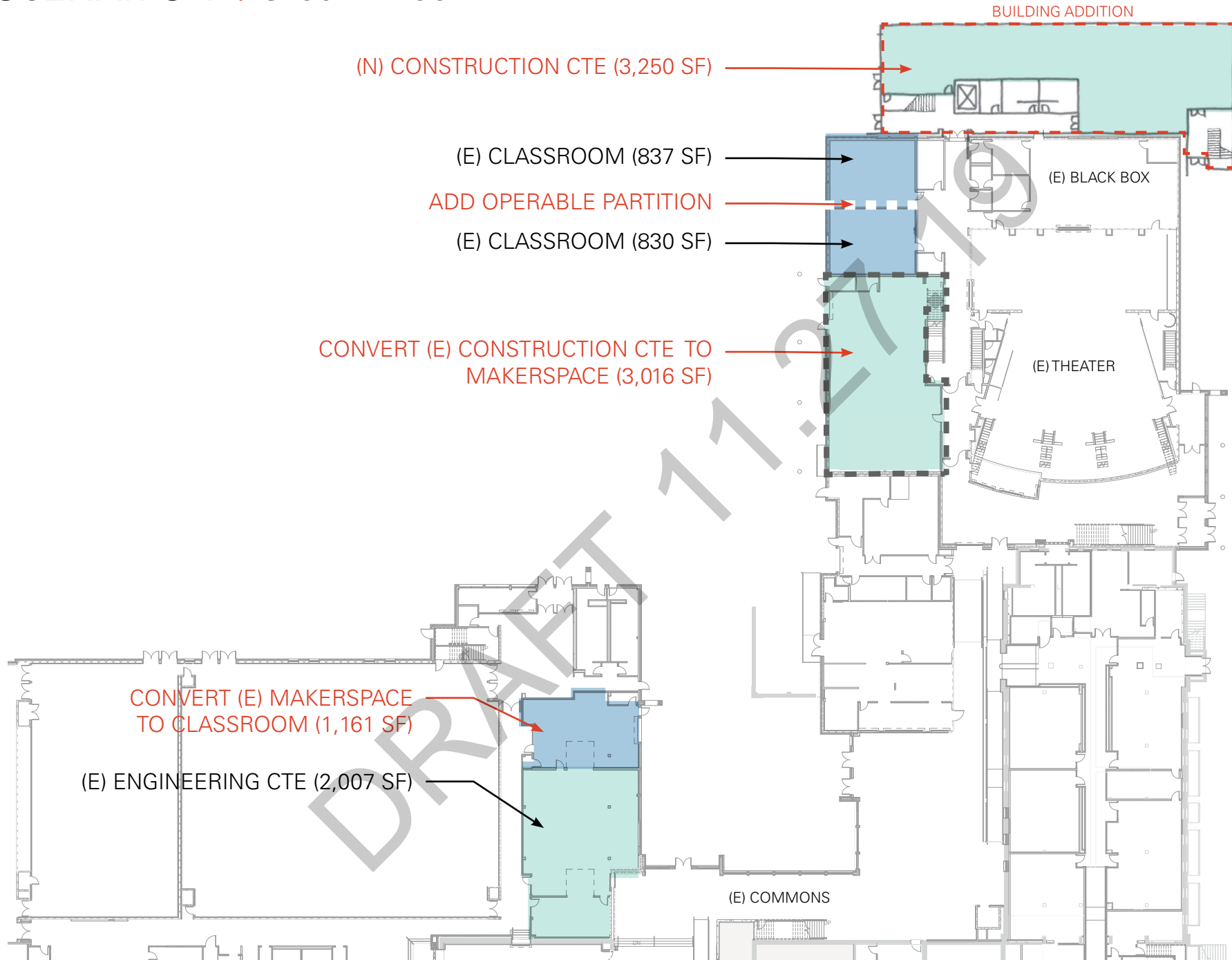
(N) DISTRICT HUB MAKERSPACE (4,105 SF)



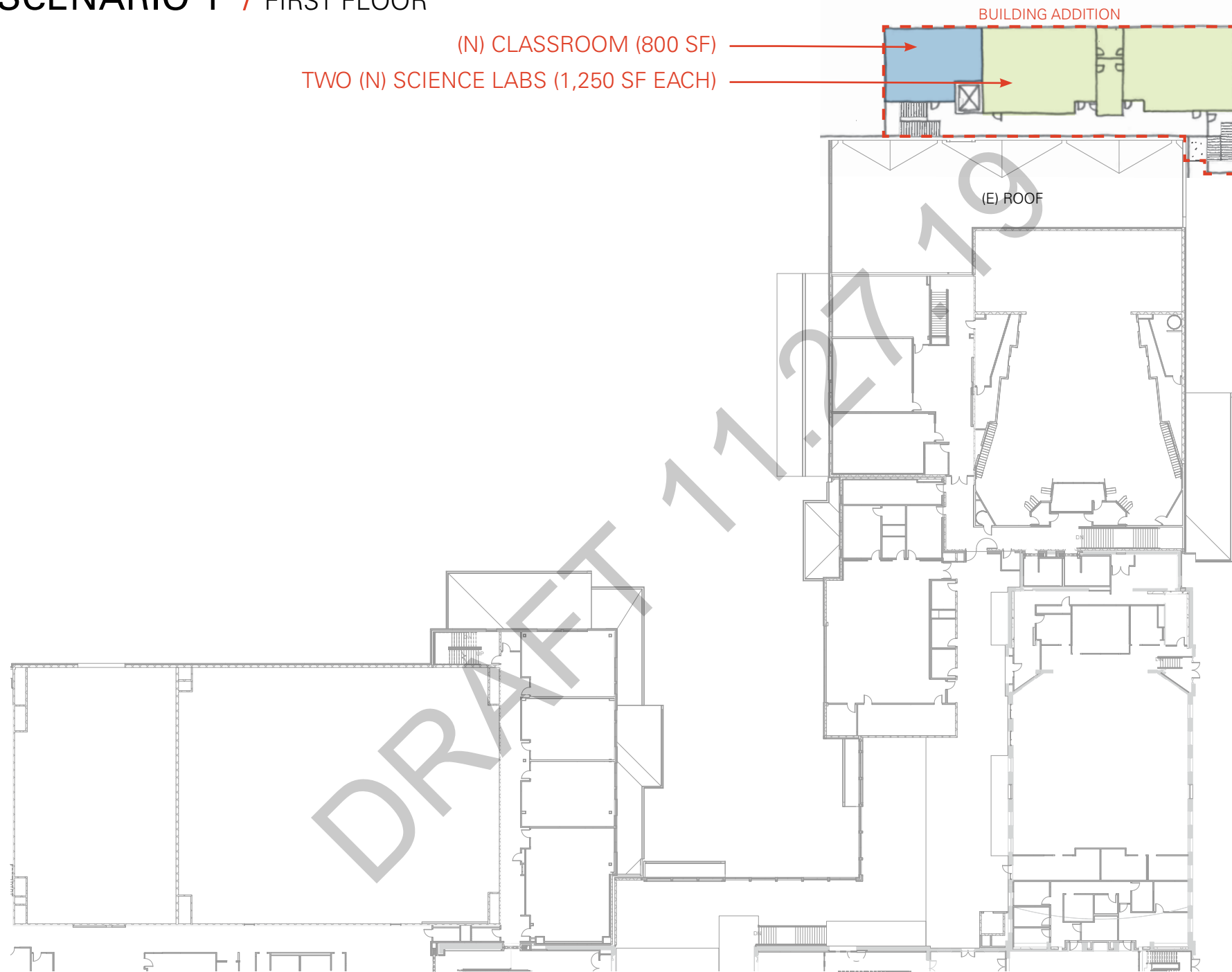
SCENARIO 1 / ADDITION WITH CONSTRUCTION CTE, SCIENCE LABS
AND MAKERSPACE RELOCATED

DRAFT 11.27.19

SCENARIO 1 / GROUND FLOOR



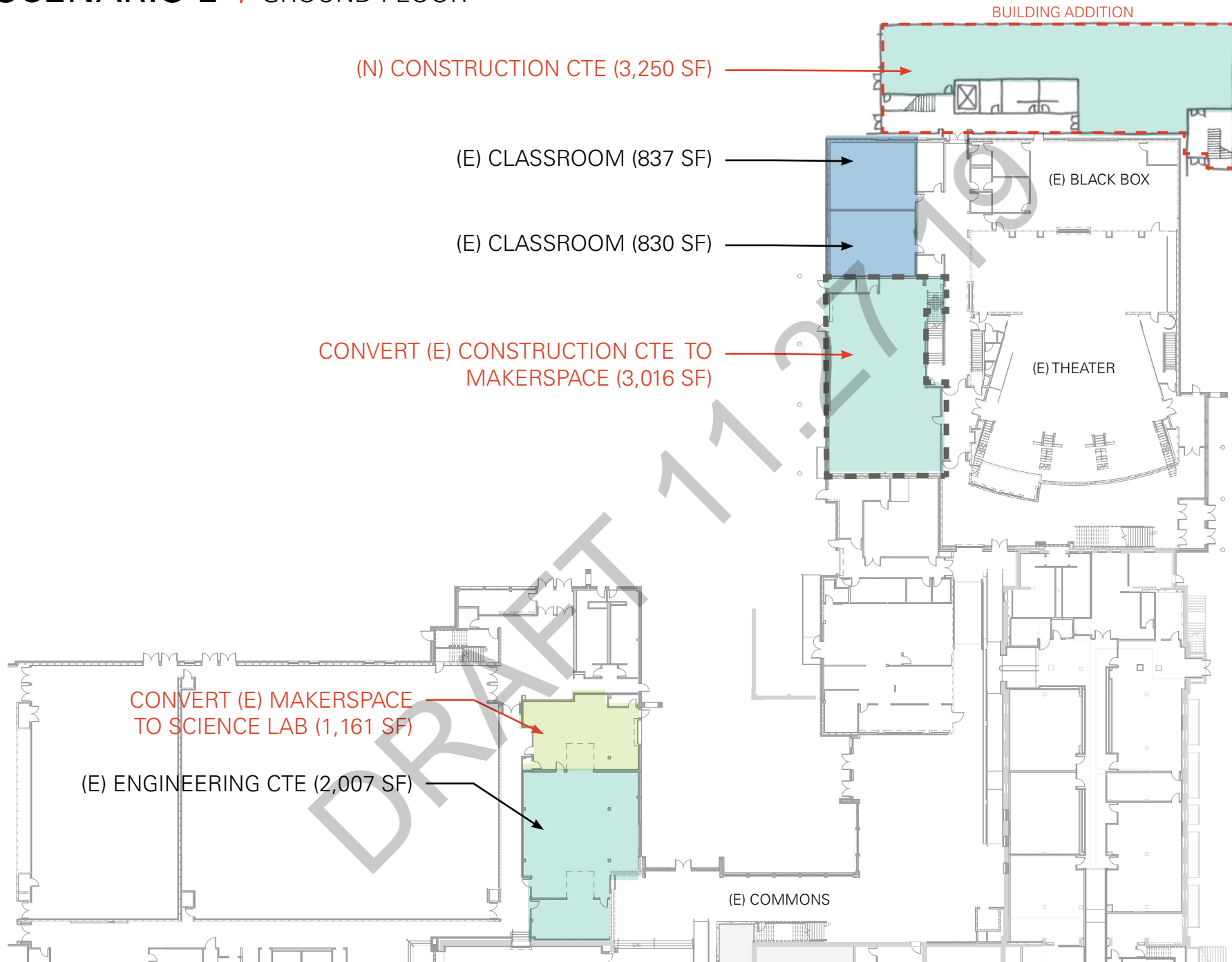
SCENARIO 1 / FIRST FLOOR



SCENARIO 2 / ADDITION WITH CONSTRUCTION CTE, GEN ED CLASSROOMS, AND MAKERSPACE RELOCATED

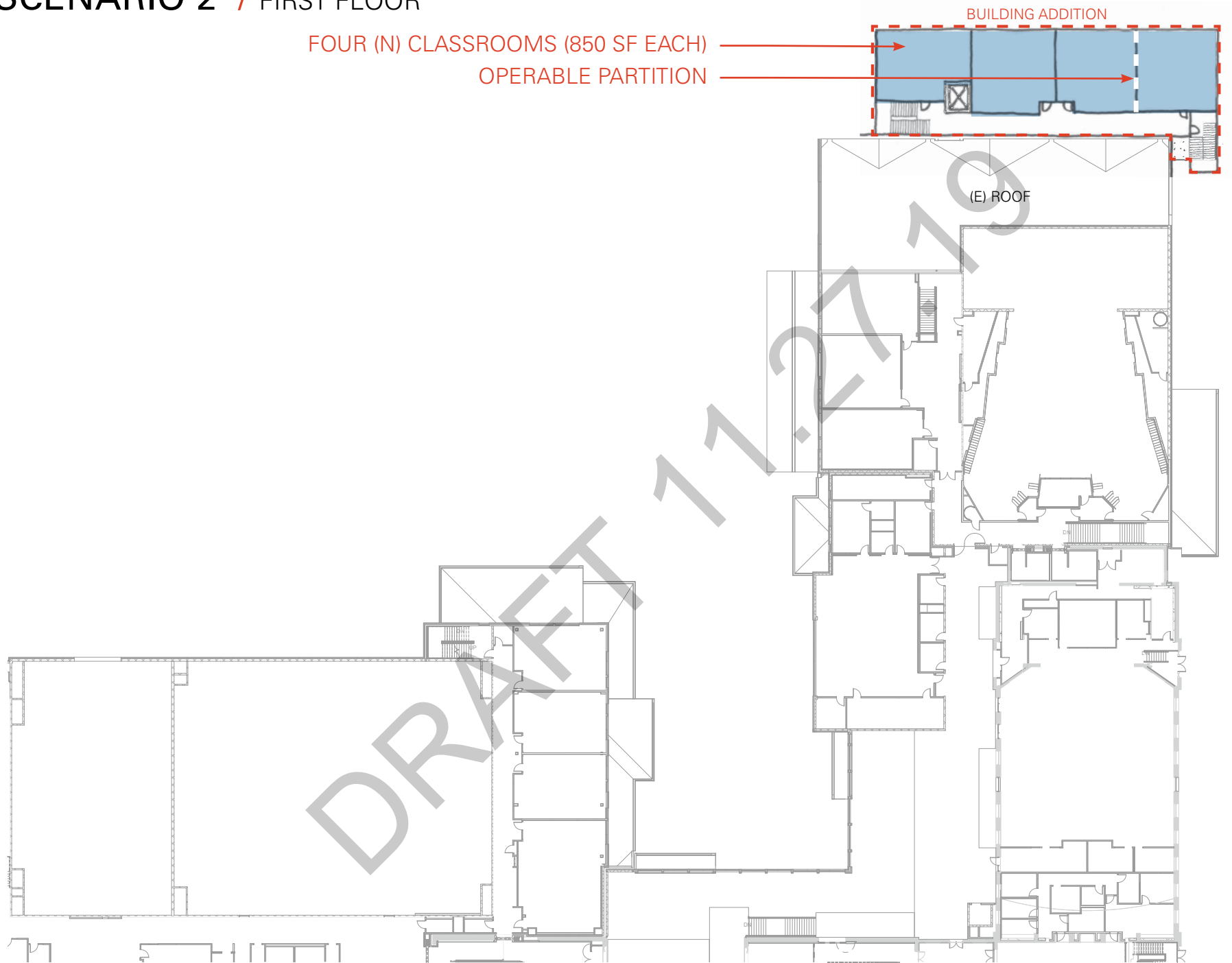
DRAFT 11.27.19

SCENARIO 2 / GROUND FLOOR



SCENARIO 2 / FIRST FLOOR

FOUR (N) CLASSROOMS (850 SF EACH)
OPERABLE PARTITION



ANALYSIS / CAPACITY INCREASE & AREAS

DRAFT 11.27.19

ANALYSIS / OPTIONS

	STUDENT CAPACITY INCREASE	2017 PPS ED SPEC	EXISTING SIZE	PROPOSED NEW	NET AREA ADDED
ORIGINAL 10,000 SF ADDITION					
(E) RHS Dedicated Maker's Lab	No change	1,200 SF	1,161 SF	No change	CLASSROOMS +0 SF
District HUB Maker's Lab	25	N/A	0 SF	4,105 SF	
(E) Construction CTE	No change	2,000 SF	2,044 SF	No change	SCIENCE +0 SF
(N) Construction CTE	25	2,000 SF	0 SF	3,460 SF	
Engineering CTE	No change	2,000 SF	2,007 SF	No change	CTE & MAKERSPACE +7,565 SF
TOTAL	50				
SCENARIO 1 - 10,000 SF ADDITION W/ SCIENCE LABS					
Science Labs (2)	60	1,500 SF		1,250 SF	CLASSROOMS +1,961 SF
Classrooms (2)	60	980 SF		800/1,161 SF	
Maker's Lab	No change	1,200 SF	1,161 SF	3,016 SF	SCIENCE +2,800 SF
Construction CTE	No change	2,000 SF	2,044 SF	3,250 SF	
Engineering CTE	No change	2,000 SF	2,007 SF	No change	CTE & MAKERSPACE +2,089 SF
TOTAL	120				
SCENARIO 2 - 10,000 SF ADDITION W/ CLASSROOMS					
Science Labs (1)	30	1,500 SF		1,161 SF	CLASSROOMS +3,400 SF
Classrooms (4)	120	980 SF		850 SF	
Maker's Lab	No change	1,200 SF	1,161 SF	3,016 SF	SCIENCE +1,161 SF
Construction CTE	No change	2,000 SF	2,044 SF	3,250 SF	
Engineering CTE	No change	2,000 SF	2,007 SF	No change	CTE & MAKERSPACE +2,089 SF
TOTAL	150				

STAFF RECOMMENDATION

FLEXIBLE VARIATION WITH
CONSTRUCTION CTE, FLEXIBLE LABS/
CLASSROOMS, AND MAKERSPACE
RELOCATED

DRAFT 11.27.19

BENEFITS OF STAFF RECOMMENDATION

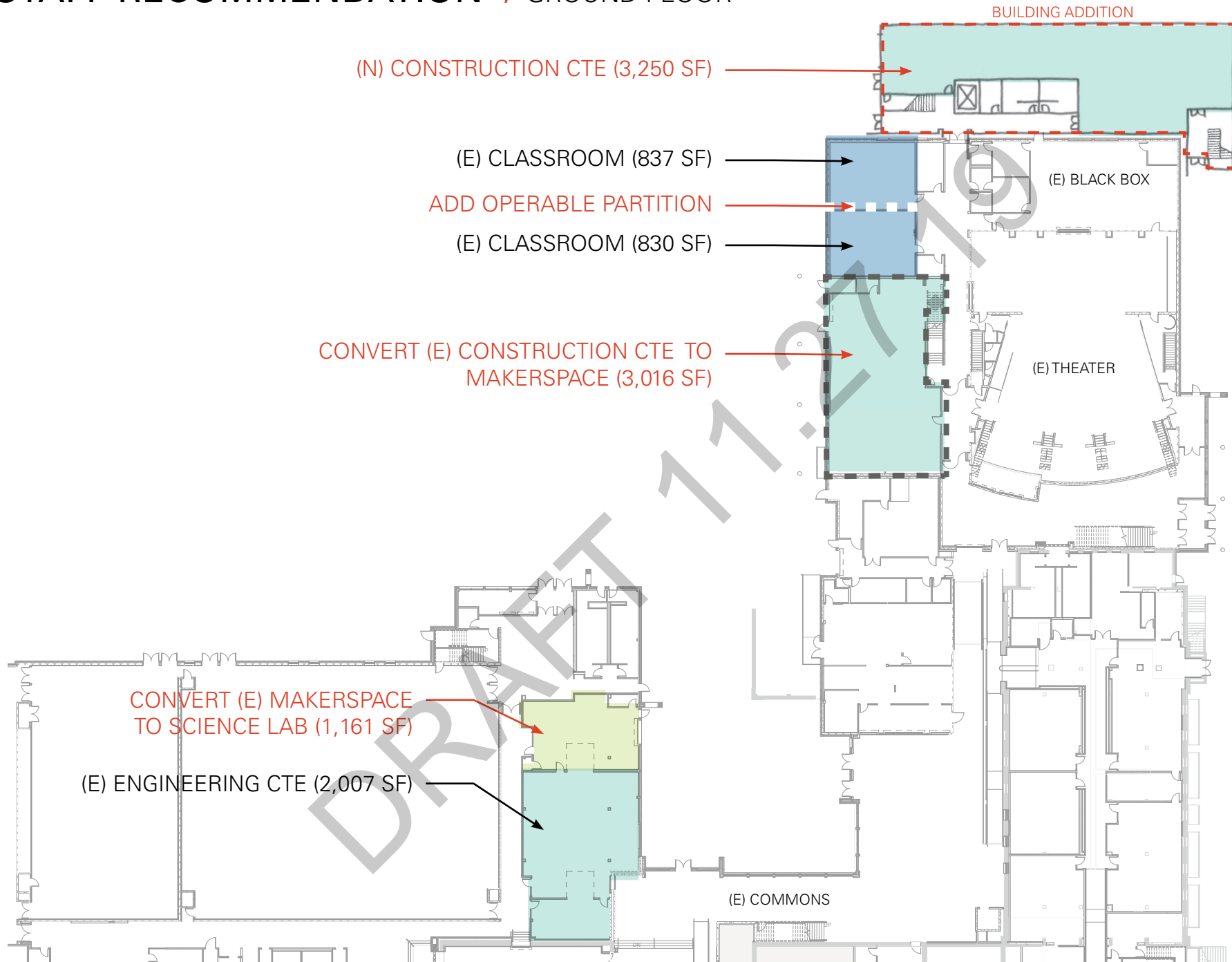
- + New, larger ground floor location for Makerspace in existing construction
- + Larger Construction CTE space with ground floor access
- + Allows capacity growth in Construction CTE
- + Accommodates senior inquiry need in more than one space

POTENTIAL USE SCENARIOS OF FLEXIBLE VARIATION

- + Relocate Computer Science CTE and Engineering CTE to new addition for co-located STEM project based learning
- + Expansion of Construction CTE

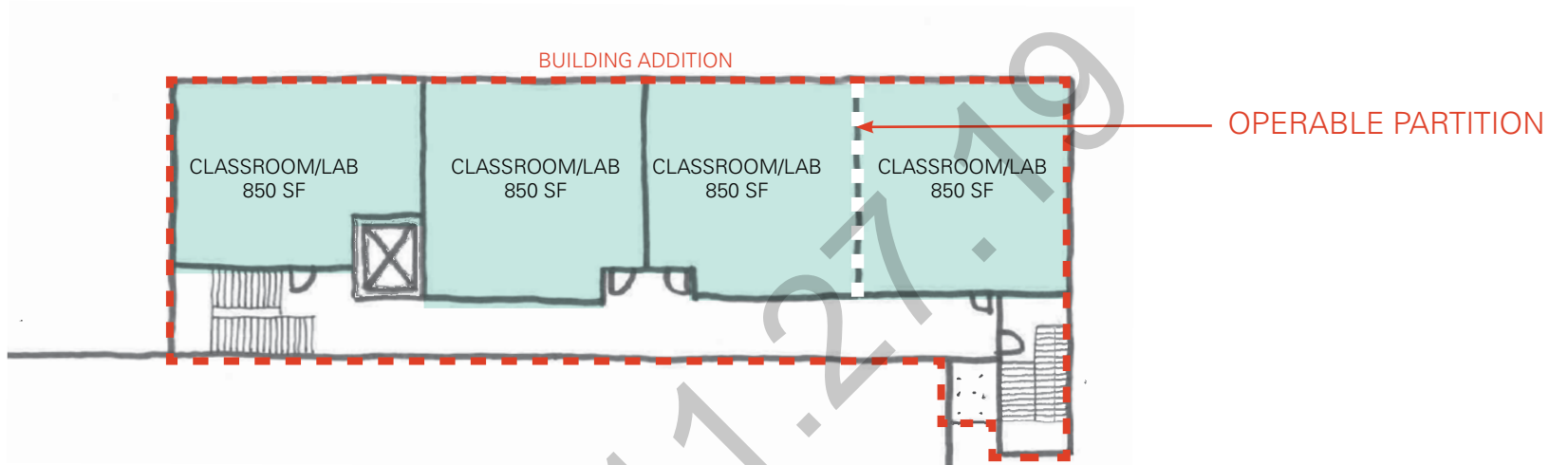
DRAFT 11.27.19

STAFF RECOMMENDATION / GROUND FLOOR

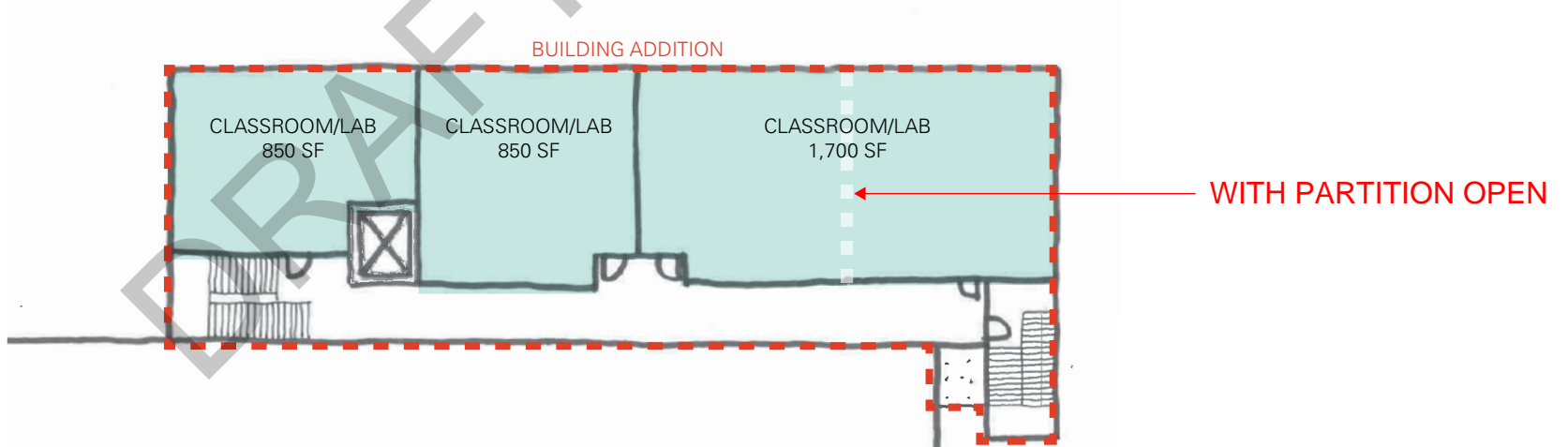


STAFF RECOMMENDATION / FIRST FLOOR

CONFIGURATION A - FOUR 850 SF CLASSROOMS OR LABS



CONFIGURATION B - TWO 850 SF AND ONE 1,700 SF CLASSROOMS OR LABS

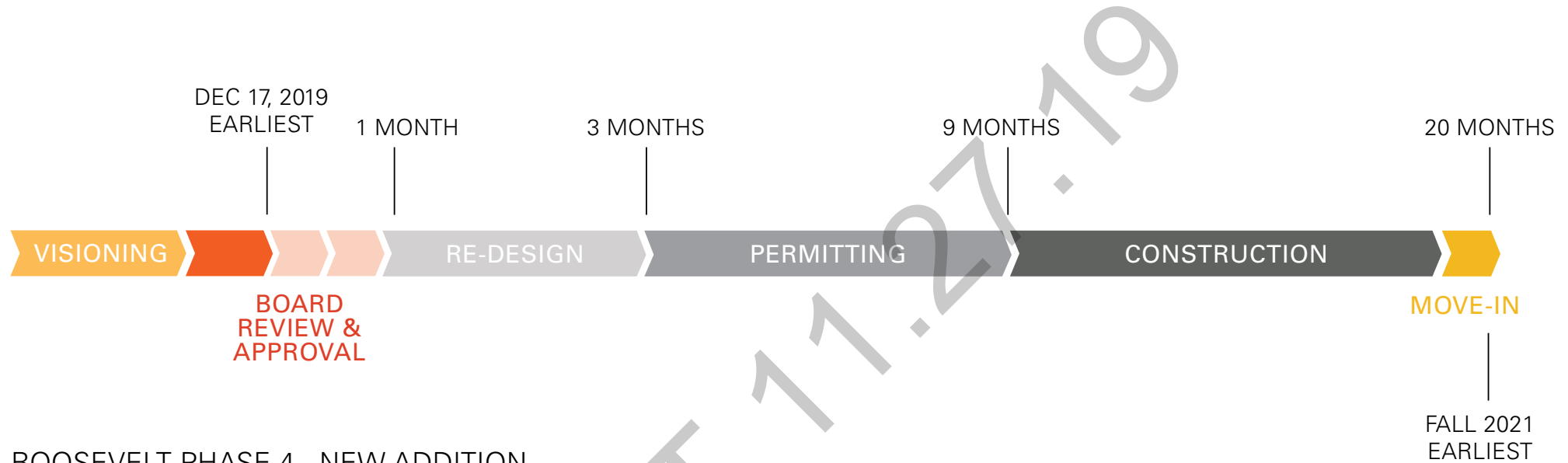


STAFF RECOMMENDATION / AREA COMPARISON

	ROOSEVELT HS	FRANKLIN HS	GRANT HS
	Option 2 with Proposed New SF	Existing	Existing
Construction CTE	3,250 SF	3,173 SF	2,519 SF
Engineering CTE	2,007 SF	0 SF	1,191 SF
Makerspace Lab	3,016 SF	1,101 SF	1,235 SF
Computer Science CTE	1,148 SF	1,187 SF	1,309 SF
Science Lab	1,161 SF	1,327 SF	1,205 SF
General Ed Classroom	850 SF	887 SF	785 SF

DRAFT 12/19

TIMELINE / ESTIMATED



ROOSEVELT PHASE 4 - NEW ADDITION

NEXT STEPS

+ Develop an implementation and focus group engagement plan upon Board approval

DRAFT 11.27.19

THANK YOU.